

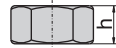
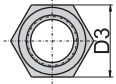
### KAT90(S)



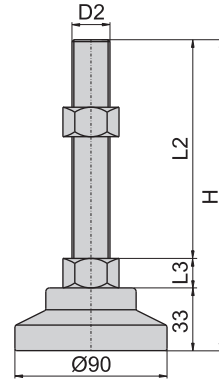
### KAT90(P)P



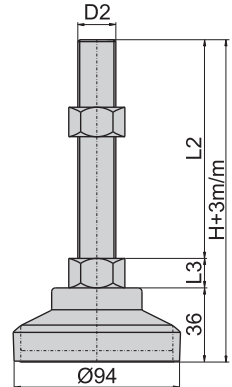
材 质	底座---铝棒
	螺杆---压抽钢条
表面处理	螺母、华司---钢
	(S)底座---镀铬光面
	螺杆、螺母、华司---鍍金电镀镀锌
	(P)底座---喷砂涂装黑色耐刮面
功 能	螺杆可旋转活动。
	螺母需另外购买



螺母编号		螺丝规格 mm/inch	对 边 D3/mm	螺母高度 h/mm
镀锌钢	电著涂装黑色钢			
M16	M16(B)	M16 × P2.0	19	13
5/8"	5/8"(B)	5/8"--11WT	23	
M20	M20(B)	M20 × P2.5	30	16
3/4"	3/4"(B)	3/4"--10WT	26	



KAT90  
无防滑橡胶盘垫



KAT90P  
配加防滑橡胶盘垫

产品编号		螺母高度 L3/mm	螺丝规格 D2/mm/inch	螺丝长度 L2/mm	总 高 H/mm	荷 重 kg		
无防滑橡胶盘垫	配加防滑橡胶盘垫							
KAT905075	KAT905075P	13	5/8"--11WT	75	121	1200		
KAT905100	KAT905100P			100	146			
KAT905125	KAT905125P			125	171			
KAT905150	KAT905150P			150	196			
KAT905200	KAT905200P			200	246			
KAT905250	KAT905250P			250	296			
KAT9016075	KAT9016075P		16	M16 × P2.0	75		121	1500
KAT9016100	KAT9016100P				100		146	
KAT9016125	KAT9016125P				125		171	
KAT9016150	KAT9016150P				150		196	
KAT9016200	KAT9016200P				200		246	
KAT9016250	KAT9016250P				250		296	
KAT906075	KAT906075P	16		3/4"--10WT	75	124	1500	
KAT906100	KAT906100P				100	149		
KAT906125	KAT906125P				125	174		
KAT906150	KAT906150P				150	199		
KAT906200	KAT906200P				200	249		
KAT906250	KAT906250P				250	299		
KAT9020075	KAT9020075P		M20 × P2.5	3/4"--10WT	75	124		1500
KAT9020100	KAT9020100P				100	149		
KAT9020125	KAT9020125P				125	174		
KAT9020150	KAT9020150P				150	199		
KAT9020200	KAT9020200P				200	249		
KAT9020250	KAT9020250P				250	299		

脚座