

CKC-1012-D-A

CKC-12-D-A



CKC-1012-D-B

CKC-12-D-B



材 质	CKC-1012---不锈钢(SUS 304)
	CKC-12---铁
表面处理	CKC-12---镀铬

CKC-1012-C-A

CKC-12-C-A



CKC-1012-B-A

CKC-12-B-A



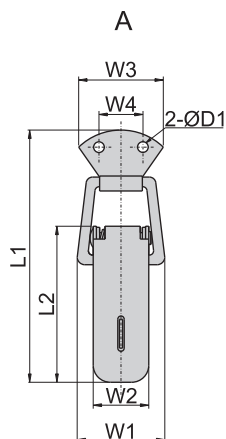
CKC-1012-A-A

CKC-12-A-A



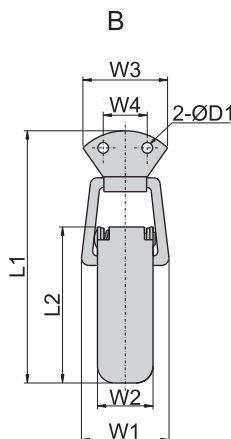
CKC-1012-C-B

CKC-12-C-B



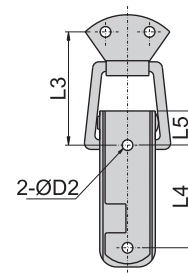
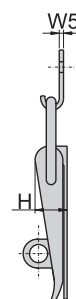
CKC-1012-B-B

CKC-12-B-B



CKC-1012-A-B

CKC-12-A-B



双扣

产品型号		L1	L2	L3	L4	L5	W1	W2	W3	W4	W5	D1	D2	H
有锁	无锁													
CKC-1012-A-A		69	44	35	24	14.5	27	16	25.5	10	1.2	4	4	11.5
	CKC-1012-A-B	69	40	30	23	10.5	22	16	25.5	10	1.2	4	4	11.5
CKC-1012-B-A	CKC-1012-B-B	81	53	35	34	12	31.5	21	28	12	1.5	5	5	12.5
CKC-12-B-A	CKC-12-B-B													
CKC-1012-C-A	CKC-1012-C-B	105	64	50	41	13	38	24	35	18	1.8	5	5	15
CKC-12-C-A	CKC-12-C-B													
CKC-1012-D-A		118	73	55	47	16	40	26	40	21	2	5	5	17
CKC-12-D-A														
	CKC-1012-D-B	118	73	53	34	16	40	26	40	21	2	5	5	17
	CKC-12-D-B													