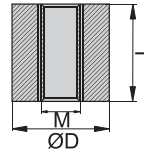


N-12-4

N-12-5

N-12-6

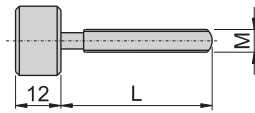
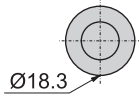


材 质	铁
表面处理	材料本质

产品型号	L	ØD	M
N-12-4	10	10	4
N-12-5	12	12	5
N-12-6	12	14	6

大头螺丝

H-19

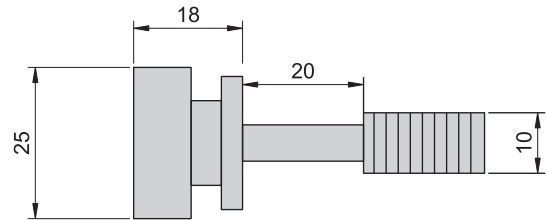
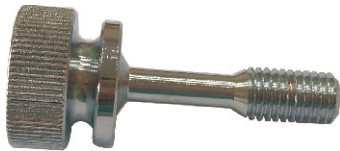


材 质	铁
表面处理	镀铬

产品型号	螺丝长度	M
H-19-M6-20	20	6
H-19-M6-30	30	
H-19-M6-40	40	
H-19-2-30	30	2分
H-19-2-40	40	
H-19-2-50	50	

子母螺丝

H-25-40

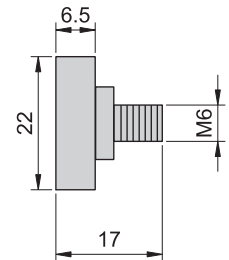
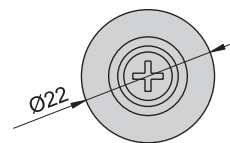


材 质	铁
表面处理	镀铬

培林轮

22#-1

22#-2



材 质	铁, 22#-2---外包塑料
表面处理	镀铬