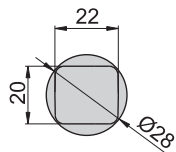
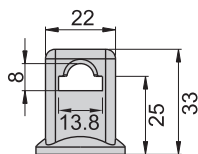


P4-15-8

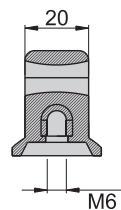
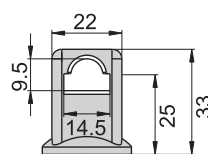
SCR6×15



P4-15-8



P4-15-9.5



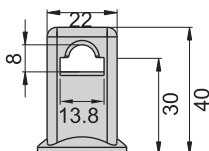
P3-15-8



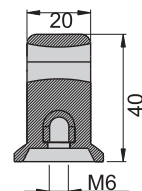
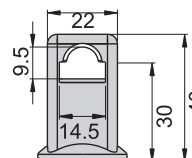
P3-15-9.5



P3-15-8

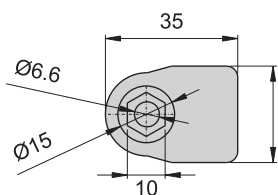


P3-15-9.5

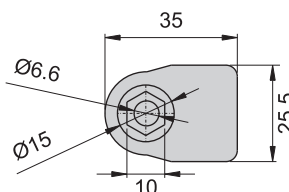


P5-15-8

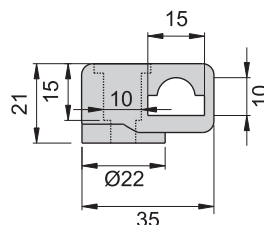
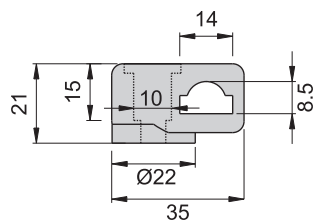
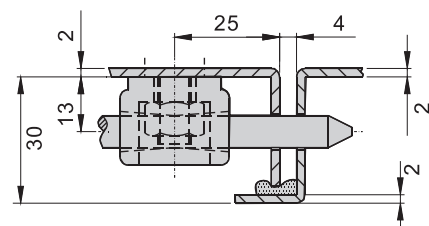
P5-15-8



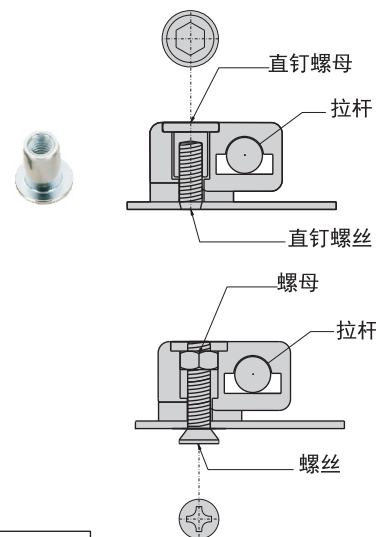
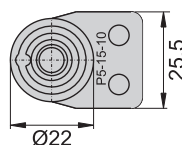
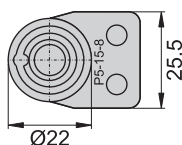
P5-15-10



使用例



P5-15-10



材 质	P3-15-8、P3-15-9.5、P4-15-8、P4-15-9.5---PA
	P5-15-8、P5-15-10---PA
表面处理	SCR6×15---铁
用 途	P3-15-8、P4-15-8、P5-15-9适用于8mm的长条圆柱连杆
	P3-15-9.5、P4-15-9.5、P5-15-10适用于9.5mm的长条圆柱连杆
	M5平头内六角适用于P5-15-8、P5-15-10
	卡座P5-15-8、P5-15-10适用于长条圆柱连杆，旋在焊接螺钉或埋头螺钉上